



## DSV™ - FWN VENTURI ORIFICE STEAM TRAP

### Description

The Delta DSV™ Venturi Orifice Steam Trap is designed for multipurpose applications from line drainage and trace heating, through to small to medium heat exchanger applications. The trap has a primary and secondary integrated strainer and a removable orifice insert. The body of the trap does not have to be removed from the line for maintenance purposes. Access to the insert orifice and both primary and secondary strainers is via the top and bottom caps.

### Standards

This product falls within Paragraph 3 of Article 3 of Directive 97/23/EC (European Pressure Equipment Directive) and therefore may not bear the CE marking. It also complies with SANS 347:2012 Category SEP.

### Certification

Manufacturer's pressure test report and material certification is available with this product. Any additional certification requirements to be stated at time of order.

### Sizes and Connections

DN15 (½"), DN20 (¾"), DN25 (1")  
 Flanged  
 BS 4504 , PN40, PN100 and ASME B16.5, 300 - 1500  
 Additional flanges available upon request

### Pressure / Temperature limits

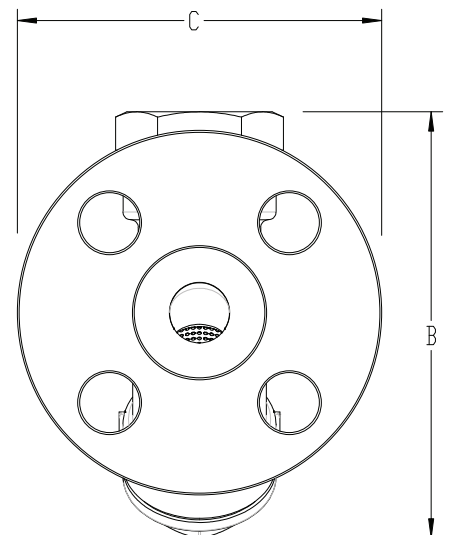
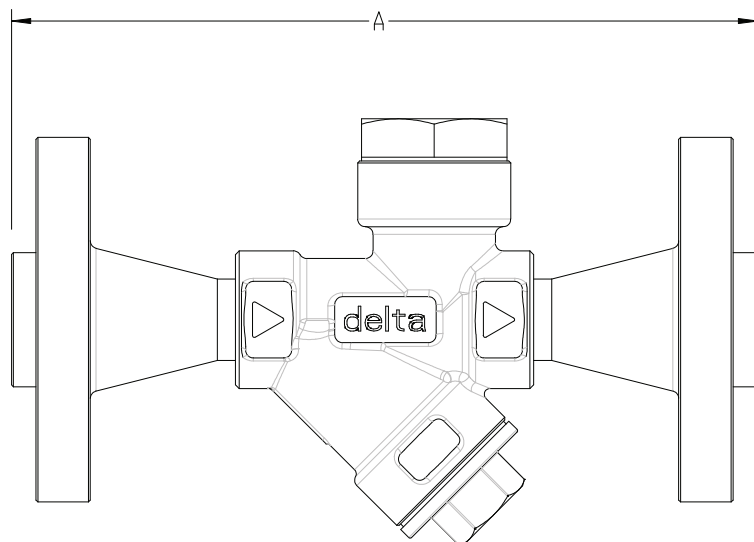
PMA (Maximum Allowable Pressure)	62 bar g	(900psi g)
TMA (Maximum Allowable Temperature)	450°C	(845°F)
PMO (Maximum Operating Pressure)	62 bar g	(900 psig)
TMO (Maximum Operating Temperature)	450°C	(845°F)
Cold hydraulic test pressure	150 bar g (2175 psi g)	
Final PMA/TMA dependant on flange specification by customer		

### Guarantee

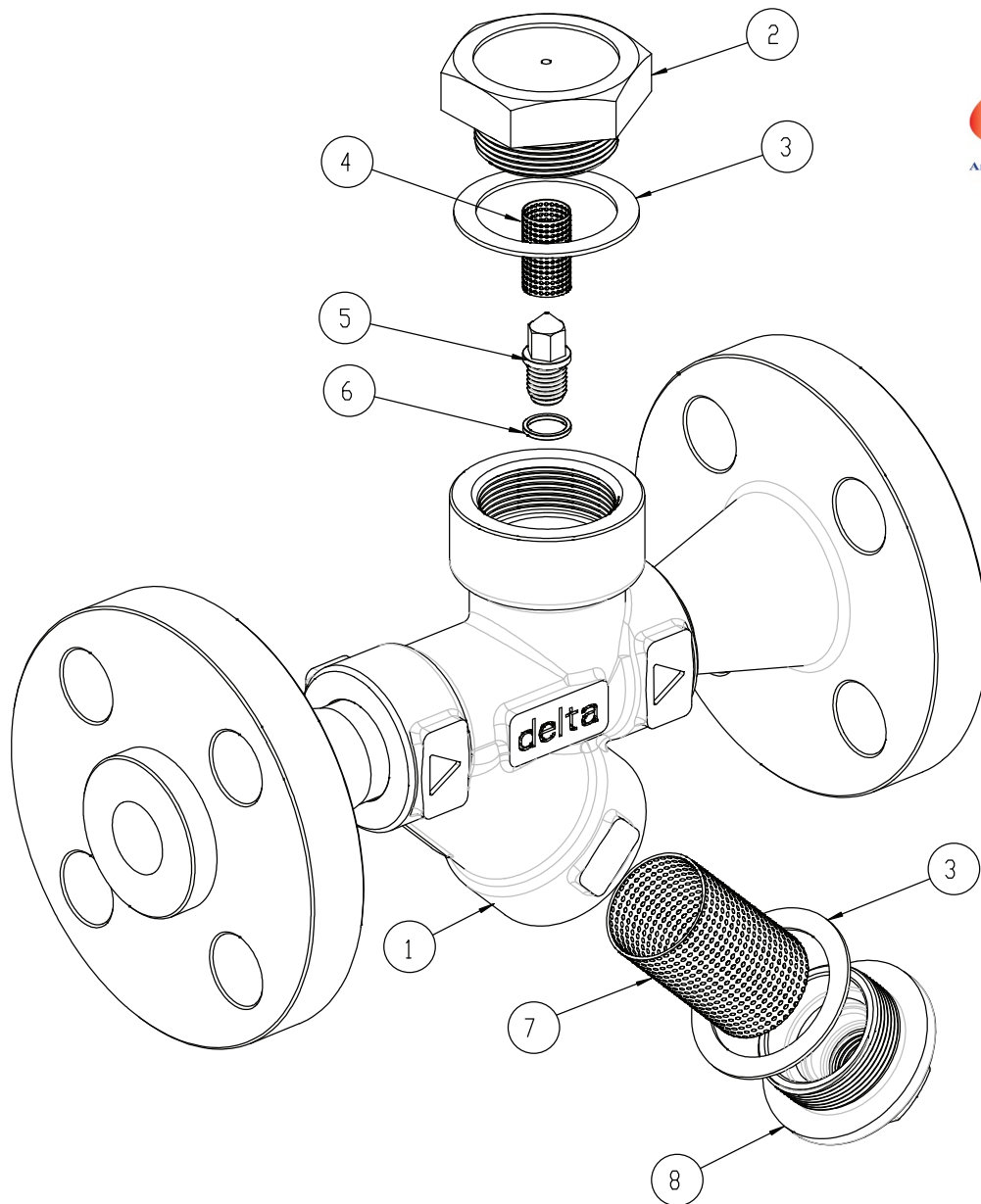
10 year product guarantee as per standard terms and conditions

### Dimensions and weights

Size	Connection	A	B	C	Weight
DN15 (½")	Flanged	195 mm	114 mm	to Flange Spec.	to Spec.
DN20 (¾")	Flanged	215 mm	114 mm	to Flange Spec.	to Spec.
DN25 (1")	Flanged	225 mm	114 mm	to Flange Spec.	to Spec.



**Assembly**



No.	Part	Material	No.	Part	Torque Settings
1	Flanged Body	ASTM A351 – CF3M	2	Top Cap	100 Nm
2	Top Cap	ASTM A351 – CF3M	5	Removable Orifice Insert	10 Nm
3	Gasket	Graphite	8	Bottom Cap	100 Nm
4	Secondary Strainer	316 Stainless Steel			
5	Removable Orifice Insert	304 Stainless Steel			
6	Orifice Insert Gasket	Chemplon			
7	Primary Strainer	316 Stainless Steel			
8	Bottom Cap	ASTM A351 – CF3M			